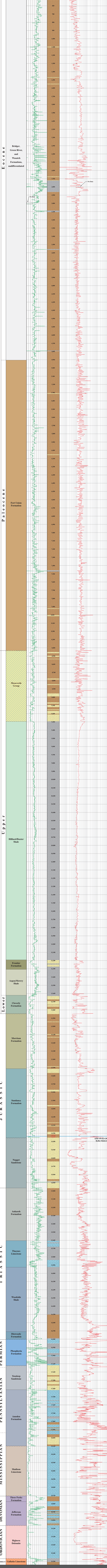


GEOLOGIC STORAGE ASSESSMENT OF CARBON DIOXIDE (CO₂) IN THE LARAMIDE BASINS OF WYOMING

TYPE LOG GREATER GREEN RIVER BASIN MOXA ARCH



WELLS USED FOR TYPE LOG

API #	Operator	Well Name	Field	County	Surface Location
49-041-05315	Wespro Company	Church Buttes Unit 19	Church Buttes	Uinta	sec. 8, T16N, R112W
49-023-20630	BP America Production Company	Keller Rubow 1	Raptor	Lincoln	sec. 12, T24N, R112W

EXPLANATION

- Unconformity
- Approximate contact
- Reconstructed cumulative log depth
- Actual log depth

Legend:
 Sandstone
 Shale
 Sandstone/shale/siltstone
 Limestone/dolomite

NOTICE TO USERS OF INFORMATION FROM THE WYOMING STATE GEOLOGICAL SURVEY

The WSGS encourages the fair use of its material. We request that credit be expressly given to the "Wyoming State Geological Survey" when citing information from this publication. Please contact the WSGS at 307-766-2286, ext. 224, or by email at wsgsales@wyo.gov if you have questions about citing materials, preparing acknowledgments, or extensive use of this material. We appreciate your cooperation.

Individuals with disabilities who require an alternative form of this publication should contact the WSGS. For the TTY relay operator call 1-800-877-9975.

For more information about the WSGS or to order publications and maps, go to www.wsgs.wyo.edu, call 307-766-2286, ext. 224, or email wsgsales@wyo.gov.

REFERENCES

Love, J.D., Christiansen, A.C., and Ver Ploeg, A.J., comps. 1993. Stratigraphic chart showing Paleozoic nomenclature for the State of Wyoming. Geological Survey of Wyoming [Wyoming State Geological Survey] Map Series MS-41.

Wyoming Oil and Gas Conservation Commission, 2012. (digital log data), at <http://wogcc.state.wy.us>.

Layout and design by James R. Rodgers
 Edited by Suzanne C. Luhr

DISCLAIMERS

The Wyoming State Geological Survey (WSGS) and the State of Wyoming make no representation or warranty, expressed or implied, regarding the use, accuracy, or completeness of the data presented herein, or of a chart printed from these data. The act of distribution shall not constitute such a warranty. The WSGS does not guarantee the digital data or any chart printed from the data to be free of errors or inaccuracies.

The use of or reference to trademarks, trade names, or other product or company names in this publication is for descriptive or informational purposes only, or is pursuant to licensing agreements between the WSGS or State of Wyoming and software or hardware developers/vendors, and does not imply endorsement of those products by the WSGS or the State of Wyoming.