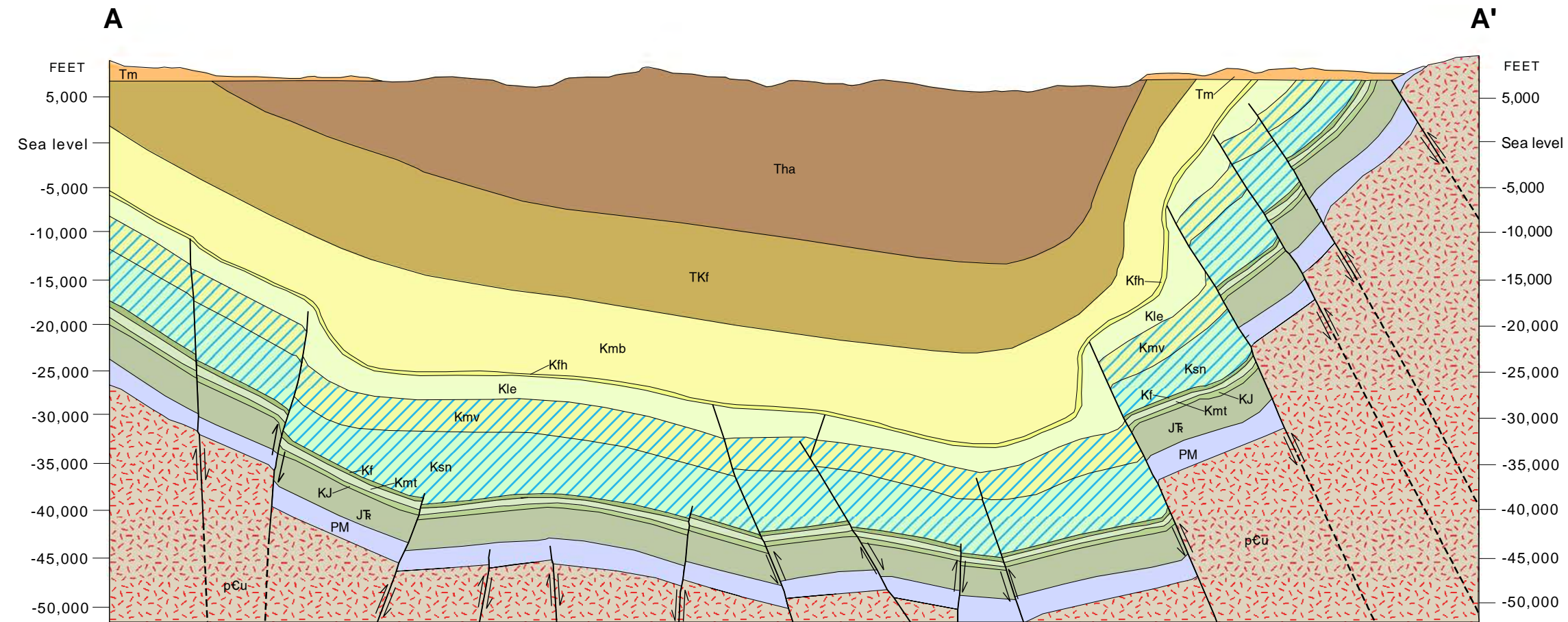


Geology - Interpreting the past - providing for the future

GEOLOGIC CROSS SECTION, HANNA BASIN, WYOMING

Vertical exaggeration ~ 2x



Modified from Kaplan and Skeen (1985). Depth was determined from time-to-depth conversion of original seismic data and may not be entirely accurate.

EXPLANATION

CROSS SECTION SYMBOLS

- Formation contact
- Fault - Dashed where inferred; arrows indicate relative movement

GEOLOGIC UNITS

CENOZOIC

Tertiary

- Tm Browns Park Formation
- Tha Hanna Formation

CENOZOIC AND MESOZOIC

Paleocene and Cretaceous

- TKf Ferris Formation

MESOZOIC

Cretaceous

- Kmb Medicine Bow Formation
- Kfh Fox Hills Sandstone
- Kle Lewis Shale
- Kmw Mesaverde Formation
- Ksn Steele Shale and Niobrara Formation

Jurassic and Triassic

- Kf Frontier Formation
- Kmt Mowry Shale, Muddy Sandstone, and Thermopolis Shale
- KJ Cloverly and Morrison Formations, undifferentiated
- JR Sundance and Gypsum Spring Formations, and Nugget Sandstone

PALEOZOIC

Permian, Pennsylvanian, and Mississippian

- PM Permian, Pennsylvanian, and Mississippian rocks undifferentiated

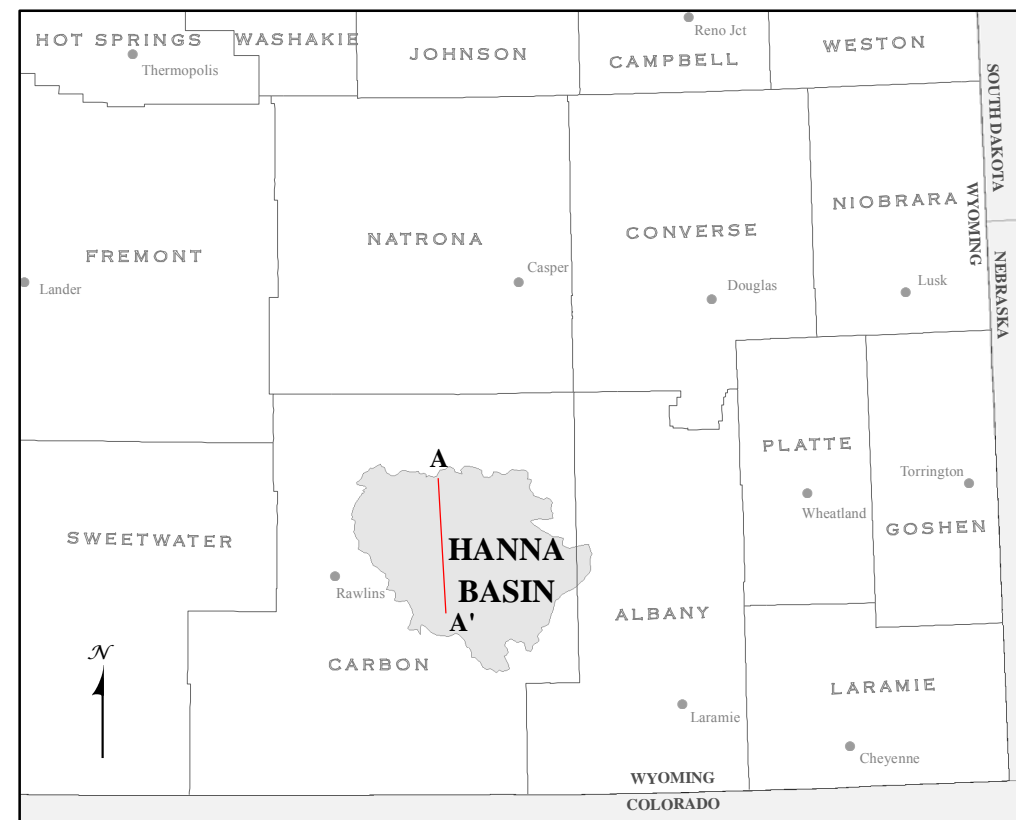
PRECAMBRIAN

- pCu Precambrian rocks, undifferentiated

REFERENCE

Kaplan, S.S., and Skeen, R.C., 1985, North-south regional seismic profile of the Hanna Basin, Wyoming, *in* Gries, R.R., and Dyer, R.C., eds., *Seismic exploration of the Rocky Mountain region*: Denver, Co., Rocky Mountain Association of Geologists, p. 219-224.

Layout and design by Robert Kirkwood and Phyllis A. Ranz
 Edited by Suzanne C. Luhr



CROSS SECTION LOCATION MAP

NOTICE TO USERS OF INFORMATION FROM THE WYOMING STATE GEOLOGICAL SURVEY

The WSGS encourages the fair use of its material. We request that credit be expressly given to the "Wyoming State Geological Survey" when citing information from this publication. Please contact the WSGS at 307-766-2286, ext. 224, or by email at wsgs.sales@wyo.gov if you have questions about citing materials, preparing acknowledgments, or extensive use of this material. We appreciate your cooperation.

Individuals with disabilities who require an alternative form of this publication should contact the WSGS. For the TTY relay operator call 1-800-877-9975.

For more information about the WSGS or to order publications and maps, go to www.wsgs.uwyo.edu, call 307-766-2286, ext. 224, or email wsgs.sales@wyo.gov.

DISCLAIMERS

The Wyoming State Geological Survey (WSGS) and the State of Wyoming make no representation or warranty, expressed or implied, regarding the use, accuracy, or completeness of the data presented herein, or of a map printed from these data. The act of distribution shall not constitute such a warranty. The WSGS does not guarantee the digital data or any map printed from the data to be free of errors or inaccuracies.

The WSGS and the State of Wyoming disclaim any responsibility or liability for interpretations made from these digital data or from any map printed from these digital data, and for any decisions based on the digital data or printed maps. The WSGS and the State of Wyoming retain and do not waive sovereign immunity.

The use of or reference to trademarks, trade names, or other product or company names in this publication is for descriptive or informational purposes only, or is pursuant to licensing agreements between the WSGS or State of Wyoming and software or hardware developers/vendors, and does not imply endorsement of those products by the WSGS or the State of Wyoming.